



GOYANG
RESEARCH
INSTITUTE

Introduction

As the think tank for Goyang city, GYRI(Goyang Research Institute) is committed to solving problems that Goyang faces, and promoting citizen's quality of life and happiness.

The Goyang Research Institute is the first local government-affiliated institute in the northern region of Gyeonggi Province to promote sustainable regional development based on the metropolitan Goyang City.

Core Values

- **Think Tank:** The first think-tank in the northern Gyeonggi Province
- **Solution Bank:** Creative researches and suggestions of policy alternatives for Goyang City
- **Data Bank:** Local-based data construction and synthetic data analysis

Think Tank

- Innovation research focused on Goyang City
- In-depth analysis of local environment in Goyang City
- Strengthen the metropolitan research network

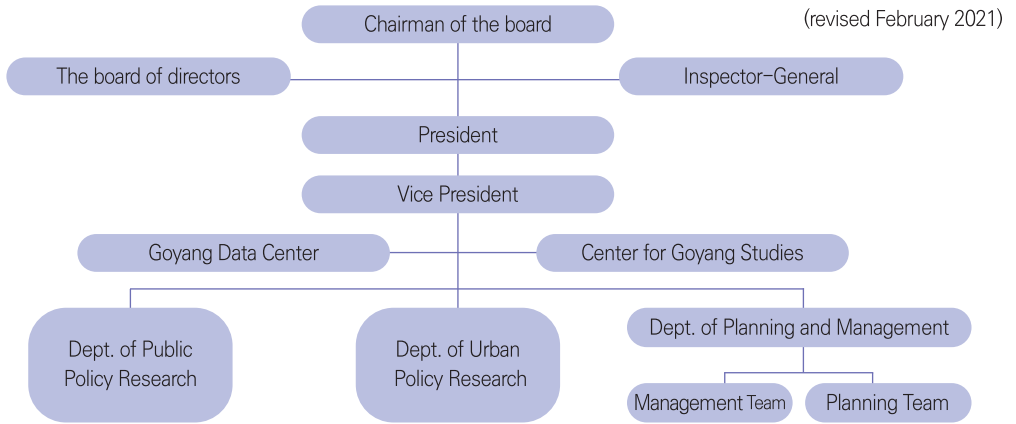
Solution Bank

- Local-based creative policy proposal
- Empirical-positive approach for citizens
- Policy recommendations based on citizen participation

Data Bank

- Proactive research based on data analysis
- Systematic implementation of local information
- Continuous information construction and analysis

Organization



Dept. of Public Policy Research		<ul style="list-style-type: none"> * Local Administration and Decentralization * Inter-Korea Exchange and Cooperation * Local Public Finance * Policy Development on Economy, Welfare * Culture, Education * Safety and Disaster Management
Dept. of Urban Policy Research		<ul style="list-style-type: none"> * Urban Development and Regeneration * Urban Planning and Design * Regional and Local Traffic Policy * Tourism, MICE Industry * Sustainable and Eco-Friendly City
Dept. of Planning and Management	Management Team	<ul style="list-style-type: none"> * Administrative Support * Enactment, Revision, and Operation of Regulations * Human Resources, Budget Management and Support * Facility Management
	Planning Team	<ul style="list-style-type: none"> * Research Project Management * Management Assessment * Academic Events Management * Cooperation with Research Networks
Goyang Data Center		<ul style="list-style-type: none"> * Regional Statistics Production and Construction * Data Archiving * Survey and Big Data Analysis * Establishment of Education and Network Council
Center for Goyang Studies		<ul style="list-style-type: none"> * Conduct Research on Goyang Regional Studies * Reinforcement of Research on Regional History in Goyang and Interdisciplinary Studies * Documenting of Goyang Regional Studies * Establishment of Goyang Regional Studies and Expanding Related Education

Research Areas and Fellows

Dept. of Public Policy Research

<p>Junghwa Moon</p> <ul style="list-style-type: none"> • Locality-based Social Security Policy • Civil Happiness and Social Integration Policy <p>jhmoon@gyri.re.kr</p>	<p>Jiho Ahn</p> <ul style="list-style-type: none"> • Inter-Korean Exchange and Cooperation • Innovation policy <p>ajh@gyri.re.kr</p>	<p>Sunyoung Kwon</p> <ul style="list-style-type: none"> • Culture and Art Policy • Education Policy <p>ksy@gyri.re.kr</p>	<p>Jungchul Lee</p> <ul style="list-style-type: none"> • Citizen safety policy • Management of natural disasters, social disaster <p>jclee@gyri.re.kr</p>
<p>Howon Suk</p> <ul style="list-style-type: none"> • Analysis of local finance • Intergovernmental grants system <p>myvirtuoso@gyri.re.kr</p>	<p>Sunghun Jeon</p> <ul style="list-style-type: none"> • Local administration • Resident autonomy <p>mpjun97@gyri.re.kr</p>	<p>Hyungsung Kim</p> <ul style="list-style-type: none"> • Public Organization & Personnel Administration • Public Conflict Management <p>hskim@gyri.re.kr</p>	<p>Yongdeok Kim</p> <ul style="list-style-type: none"> • Regional Economic Policy • Industry Trends Analysis <p>kyd@gyri.re.kr</p>

Dept. of Urban Policy Research

<p>Hyunjung Lee</p> <ul style="list-style-type: none"> • Local Economic Development Policy • Corporate Support and Innovation Startup Ecosystem Policy <p>hjlee@gyri.re.kr</p>	<p>Jiyeol Im</p> <ul style="list-style-type: none"> • Eco-city(Smart and Green infrastructure) • Innovated wastewater treatment and Renewable energy <p>jiyim@gyri.re.kr</p>	<p>Leeyoung Kim</p> <ul style="list-style-type: none"> • Urban and regional planning • Policies for regional development and housing <p>kimlee@gyri.re.kr</p>	<p>Shinhee Yun</p> <ul style="list-style-type: none"> • Scale Development • Development of evaluation index <p>shyun@gyri.re.kr</p>
<p>Joohyun Baek</p> <ul style="list-style-type: none"> • Transportation planning and Policy • Public Transportation, Railway Policy / Smart Mobility <p>baek@gyri.re.kr</p>	<p>Kwangjin Jung</p> <ul style="list-style-type: none"> • Urban Planning and Design • Policies for urban space <p>jkj815@gyri.re.kr</p>	<p>Eunjin Kim</p> <ul style="list-style-type: none"> • Tourism Policy • MICE industry Policy <p>kej@gyri.re.kr</p>	

Research Cooperation MOU

- 2020
 - National Cancer Center
 - Kyonggi University
- 2019
 - Korea Local Tax Research Institute
 - Dongguk University
 - Korea Research Institute for Human Settlements
- 2018
 - Gyeonggi Research Institute
- 2017
 - Jungbu University
 - Changwon Research Institute
 - Korea Aerospace University
 - Suwon Research Institute

2020 Research Activities

|| Research in 2020 ||

NO.	Total	Dept. of Public Policy Research	Dept. of Urban Policy Research
Total	51	29	22
Basic Research	11	6	5
Strategy · Policy Research	27	16	11
Current issues Research	9	5	4
Contracted Research	1	1	0
etc	3	1	2

- **Basic Research**
Reinforcement of researcher's research ability and long-term vision research
- **Strategy Research**
Research on major mid-to long-term policy tasks
- **Policy Research**
Research on applicable policy directions and recommendations in Goyang City
- **Current Issues Research**
Practical short-term study on current issues in Goyang City
- **Contracted Research**
Research service upon request from an external institution

|| Basic Research(11) ||

No.	Title	Author
1	An Analysis on the Status of Culture and Arts Education in Goyang City	Sunyoung Kwon
2	A Study on the reasonable functional coordination between the main and subordinate offices in Goyang City	Sunghun Jeon
3	A Study on the Policy Needs and Social Aspect Analysis of Goyang Citizens Using Social Survey	Shinhee Yun
4	Analysis of the Travel Characteristics in Goyang City	Joohyun Baek
5	A Study on Active Ageing Policy for Healthy Elderly in Goyang City	Junghwa Moon
6	A Basic Framework for the City of Peace Economy located in the North-west Border's Network of Gyeonggi-do	Jiho Ahn
7	A Study on the Current Status of Safety and the Improvement of Safety Management in Elderly Care Facilities in Goyang City	Jungchul Lee
8	A Study on the Changes of Population Structure in the Local government	Howon Suk
9	Research on Introduction strategy of low Impact development (LID) in Goyang city [2]	Jijeol Im
10	A Study on the Housing Policy in Goyang City I	Leeyoung Kim
11	Policy Development of the ICT·SW Industry in Goyang, toward the Prosperity of the Digital Contents Industry	Hyunjung Lee

|| Strategy · Policy Research(27) ||

No.	Title	Author
1	2020 Major Financial Projects Assessment Report in Goyang City	Changkyun Lee
2	A Proposal Study on the Population Projection and demand for population policies Project in Goyang City	Leeyoung Kim
3	A Study on Goyang Special Tourist Zone Promotion Plan	Sooyeop Song
4	Investigation of Healthcare Facilities Resources in Goyang City to Establish a System for Promoting inter-Korean Health and Medical Cooperation	Jiho Ahn
5	A Study on the Status analysis and Management Improvement of Investment Projects in Goyang City	Changkyun Lee
6	A Study on the Countermeasures of Goyang City to Improve the Integrated Fare System in the Metropolitan Area	Joohyun Baek
7	Exploring institutionalization directions of resident autonomy in Goyang City	Howon Suk
8	Development of Indicators to Measure the Happiness of Goyang Citizens	Junghwa Moon
9	A Study on how to build a Youth Start-up Ecosystem in Goyang City - for 28 Youth Start-ups	Hyunjung Lee
10	Research on Rainfall Characteristics urban flood damage in GoYang city	Jiyeol Im
11	A Study on actual conditions and needs for Foreign residents support policy in Goyang City	Sunghun Jeon
12	Research for the Development of a Lifelong Learning City Index of Goyang	Shinhee Yun
13	A Study on the Analysis of Current status for Revitalization of Museums in Goyang City	Sunyoung Kwon
14	An Analysis of Labor Status and the Development of Support Plans for Nonregular Workers in Goyang City	Jungchul Lee
15	A Study on the Possibility of Introduction to Human Rights Impact Assessment (HRIA) in Goyang City	Jiho Ahn
16	A Study on the Master Plan for Foreign Residents & Multicultural Family support in Goyang City	Sunghun Jeon
17	A Study on Formulating of Basic Plan(2021-2024) for Promoting the Happiness of Goyang Citizens	Junghwa Moon
18	Research on Improving Resource Recycle plant in Goyang City	Jiyeol Im
19	A Study for Fostering and Activation of Flower Industry in Goyang City through the establishment of Smart Flower Cluster	Hyunjung Lee
20	A Study on the Revitalization of Shared Economy in Goyang City	Shinhee Yun
21	A Study on the Basic Planning for Building up Regional Autonomous Communities in Goyang City	Jungchul Lee
22	2019 Goyang City Civil Event Assistance Projects Operation Assessment Report	Changkyun Lee
23	A study on needs of deinstitutionalization of persons with disabilities in residential institutions in Goyang City and policy plan to support their independent Living	Junghwa Moon
24	A Study on the Mid-long Term Development Plan for the Cultural Policy in Goyang City for the Purpose of Promoting Regional Culture	Sunyoung Kwon
25	A Study on the Rational Land Use Planning for KINTEX Area Development	Leeyoung Kim
26	A Study on the Role of Residents' Autonomous Council According to the Characteristics of Goyang City.	Howon Suk
27	A Study on the Policy Direction of the Public Rental Housing Policy in Goyang city	Leeyoung Kim

|| Current Issues Research(9) ||

No.	Title	Author
1	A Proposal Study on the Space under Overpasses Redevelopment Project in Goyang City	Leeyoung Kim
2	The changes in the Life of the Elderly due to the Spread of Corona19 and Countermeasures	Junghwa Moon
3	A Study on the Improvement of Delegated Discretion in Goyang City	Sunghun Jeon
4	Analysis of the status of local governments' sharing economy	Shinhee Yun
5	A Study of Reasonable Alternatives of Planning Gains Sharing in Public Development Projects in Goyang City	Leeyoung Kim
6	Analysis of Goyang Citizens' Needs for Lifelong Learning – Focused on the analyzing texts in a women-centered online community	Sunyoung Kwon
7	A Study on the Status Analysis and Improvement for COVID-19 Infection Prevention and Management in Goyang City	Jungchul Lee
8	Research on the distribution characteristics of micro-plastic in storm-water sedimentation Janghang wetland	Jiyeol Im
9	A Study on the Usage of Online Platform to Respond Against "With Covid-19 era"	Hyungsung Kim

|| Contracted Research(1) ||

No.	Title	Author
1	A Study on the Establishing Development Model for North Korean defector's settlement in Goyang-si	Jiho Ahn

|| Etc. (3) ||

No.	Title	Author
1	A Study on the Performance Evaluation of Agricultural and Fishery Product Distribution Center in Goyang City	Sunghun Jeon
2	Goyang City Disaster Relief Aid Public Awareness Survey	Shinhee Yun
3	Goyang City Goyang Pay Member Store Satisfaction Survey(Actual State Survey)	Shinhee Yun



GOYANG RESEARCH INSTITUTE

(Zip 10393) 11F, Bitmaru Bldg., 60 Taegeuk-ro, Ilsandong-gu, Goyang-si, Gyeonggi-do,
Republic of Korea

T. 031-8073-8341 F. 031-8073-0710

www.gyri.re.kr | www.facebook.com/goyangre